

DOI: 10.2298/GABP1475001S

## Lower Triassic (Olenekian) microfauna from Jadar Block (Gučevo Mt., NW Serbia)

MILAN N. SUDAR<sup>1</sup>, YANLONG CHEN<sup>2</sup>, TEA KOLAR-JURKOVŠEK<sup>3</sup>,  
BOGDAN JURKOVŠEK<sup>3</sup>, DIVNA JOVANOVIĆ<sup>4</sup> & MARIE-BEATRICE FOREL<sup>5</sup>

**Abstract.** Systematic study of microfossil associations on the Krivi Potok section (Gučevo Mt. area, NW Serbia) has been carried out to document and to refine the Lower Triassic stratigraphic correlations within Alpine-Mediterranean domain. Field investigation and laboratory process have enabled the identification of lowermost Olenekian (lower Smithian) conodonts, ostracodes and pyrite framboids. Two conodont zones are established in this region, in ascending order they are: *Pachycladina obliqua–Foliella gardenae* Assemblage Zone and *Neospathodus planus* Zone. A new ostracode species *Paracypris ? krivipotokensis* FOREL n. sp. has been described, it co-occurs with conodont *Neospathodus planus* within the Zone of the same name. The pyrite framboids were formed within the ostracode carapaces after their death. The size distribution of pyrite framboids supports the former suggestion that large size (>6 µm in diameter) is not suitable for the reconstruction of seawater redox conditions.

**Key words:** Lower Triassic, Olenekian, conodonts, ostracodes, pyrite framboids, Jadar Block, North-western Serbia.

**Апстракт.** Систематско изучавање микрофосила профила Криви поток у области планине Гучево спроведено је ради документовања асоцијација и утврђивања детаљнијих доњотријаских стратиграфских односа у северозападној Србији, а у циљу корелација у оквиру Алпско-медитеранског региона. Након детаљног теренског рада и лабораторијских обрада узоркованог материјала, омогућена је идентификација старости конодоната, остракода и пиритских фрамбоида и добијен је најнижи олењок (доњи смит). У испитиваној области утврђене су две конодонтске зоне, *Pachycladina obliqua–Foliella gardenae* Assemblage Zone и *Neospathodus planus* Zone. Такође је описана нова остракодска врста *Paracypris ? krivipotokensis* FOREL n. sp., која се појављује удружена са врстом *Neospathodus planus* у истоименој конодонтској зони. Присутни пиритски фрамбоиди су настали унутар остракодских љуштура после њиховог изумирања, а како су пречника већег од 6 µm потврђена је ранија сугестија да због тога нису били погодни за реконструкцију оксидо-редукционих услова у морској води.

**Кључне речи:** доњи тријас, олењок, конодонти, остракоди, пиритски фрамбоиди, Јадарски блок, северозападна Србија.

<sup>1</sup> University of Belgrade, Faculty of Mining and Geology, Departement of Palaeontology, Kamenička St. 6, P.O.Box 62, 11120 Belgrade-35, Serbia. E-mail: sudar@rgf.bg.ac.rs

<sup>2</sup> University of Graz, Nawi Graz, Institute of Earth Sciences, Heinrichstrasse 26, 8010 Graz, Austria. E-mail: chenyanlong4304103@hotmail.com

<sup>3</sup> Geological Survey of Slovenia, Dimičeva ulica 14, SI-1000 Ljubljana, Slovenia. E-mails: tea.kolar@geo-zs.si; bogdan.jurkovsek@geo-zs.si

<sup>4</sup> Geological Survey of Serbia, Rovinjska 12, Serbia. E-mail: djdivna@gmail.com

<sup>5</sup> Faculty of Earth Sciences, China University of Geosciences (Wuhan), 388 Lumo Road, Wuhan, Hubei Province, China. E-mail: mbforel@yahoo.fr

## Introduction

The Lower Triassic sediments are widespread in the Jadar Block of Northwestern Serbia. Together with the Upper Permian rocks and the Permian–Triassic boundary interval, they have been intensively studied especially because represent the only such formations of this age in Serbia. Generally, the Upper Permian sediments contain diverse macro- and micro-biocenoses, whereas the Lower Triassic microfossil associations are rather poor.

Gučevo Mt. is situated in the north-western part of the Jadar Block, on the eastern side of the Drina River and southern of the Loznica town (Fig. 1). It is predominantly built of Lower Triassic sediments, which the Serbian authors mostly divided in the older „Seisian” and the younger „Campilian” beds. After repeated numerous field investigations of this area, authors of the paper intended to document new geological data to refine existing stratigraphic and lithostratigraphic definitions.

Therefore, the aim of this paper was to confirm the presence of different microfossils (conodonts, foraminifera, ostracodes, etc.) and biostratigraphic data

within the Lower Triassic sediments of the Jadar Block, NW Serbia. It represents the continuation of the ongoing geological study, started in 2005 year with micropaleontological/sedimentological investigations in P–T boundary interval of NW Serbia (SUDAR *et al.* 2007, NESTELL *et al.* 2009, CRASQUIN *et al.* 2010).

## Geological settings

Geographically, the Jadar Block, is located at the southern margin of the Pannonian Basin, and belongs to the central part of the Balkan Peninsula. It occupied great parts of the northwestern Serbia, southern Srem (Vojvodina) and extends partly westward over the Drina River into eastern Bosnia (Fig. 1).

This tectonostratigraphic unit is today an exotic block, which was placed into the Vardar Zone before the late Cretaceous. It is surrounded by the Vardar Zone Western Belt, except on the farthest south-eastern part where it is in direct contact with the Kopaonik Block and the Ridge Unit (Fig. 1). The Jadar Block differs from the Vardar Zone Western Belt in lacking

post-Liassic sediments as well as in the absence of ultramafites, ophiolitic mélangé, and Cretaceous flysch development (FILIPOVIĆ *et al.* 2003).

In this area, the deposition occurred during the Variscan and Early Alpine evolution with a predomination of Dinaridic features. The later tectonic stage is characterized by sedimentation of Upper Permian and lowermost Triassic shallow-water marine carbonates, dolomites of the Anisian age, „porphyrites” and pyroclastics of Ladinian age, platform-reefal limestones of Middle and Late Triassic age and their gradual transition into Lower Jurassic limestones.

In the Jadar Block the Upper Permian is represented by the „Bituminous Limestone” Formation and the Lower Triassic by the Svileuva and Obnica formations (FILIPOVIĆ *et al.* 2003).

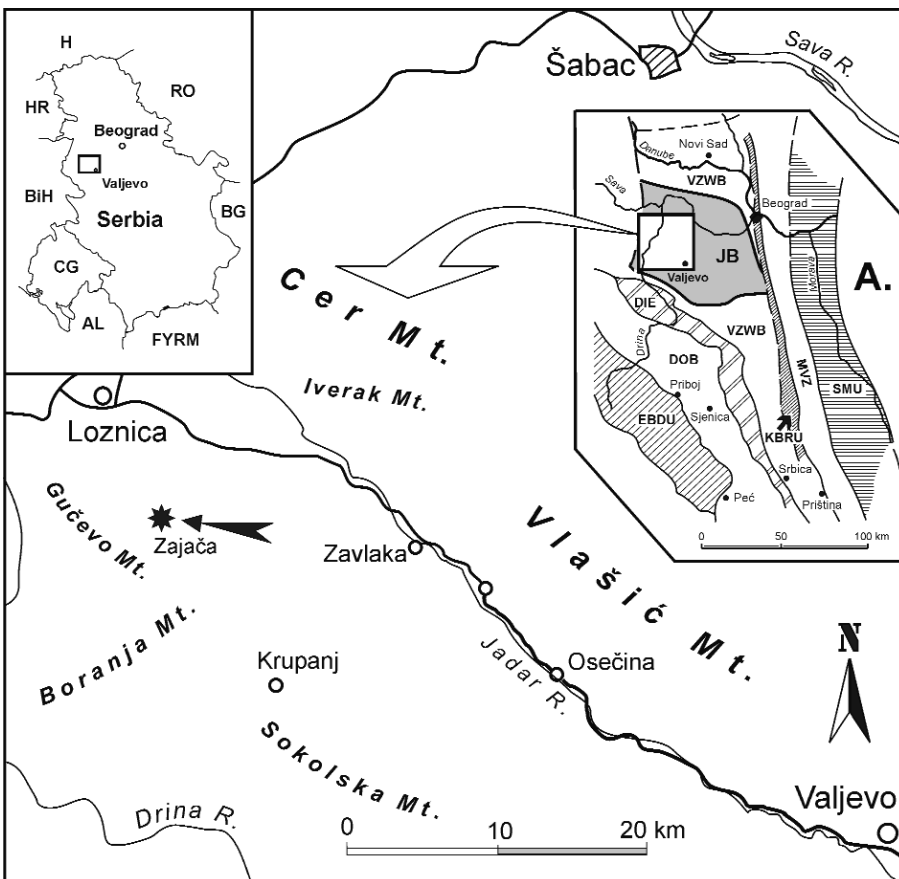


Fig. 1. Location map of the Krivi Potok section (asterisk) on the Gučevo Mt. (Jadar Block, NW Serbia) (modified after SUDAR *et al.* 2007). A. Terranes of a part of the Balkan Peninsula (KARAMATA *et al.* 2000; KARAMATA 2006): SMU, Serbian-Macedonian Unit; MVZ, Main Vardar Zone; KBRU, Kopaonik Block and the Ridge Unit; VZWB, Vardar Zone Western Belt; JB, Jadar Block; DIE, Drina-Ivanjica Element; DOB, Dinaridic Ophiolite Belt and EBDU, East Bosnian-Durmitor Unit.

## Krivi Potok section

On the central parts and on the eastern slopes of the Gučevo Mt. there are mostly exposed

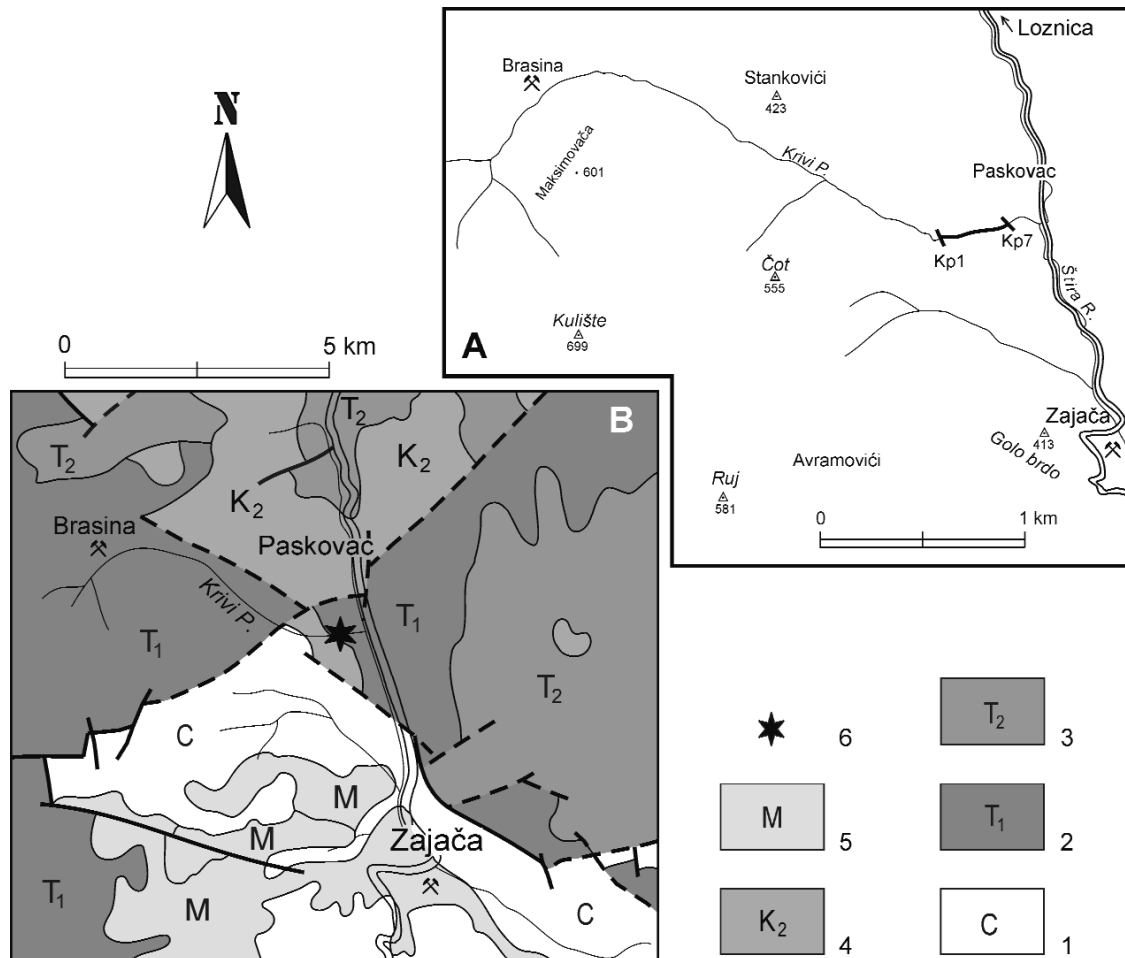


Fig. 2. Geographic position of the studied section on the eastern slopes of the Gučevo Mt. (A) simplified and modified geological map after MOJSILOVIĆ *et al.* 1975 of the same areas (B). Legend: 1, Carboniferous rocks; 2, Lower Triassic sediments; 3, Middle Triassic rocks; 4, Upper Cretaceous sediments; 5, Miocene dacites, andesites and pyroclastics; 6, Location of the Krivi Potok section.

grey thin bedded to bedded limestones, in alternation with siltstones and sandstones of the upper Lower Triassic Obnica Formation (FILIPOVIĆ *et al.* 2003) generally thick about 200–350 m (MOJSILOVIĆ *et al.* 1975). These sediments, especially in surroundings of the old mine Brasina and in the source part of the stream Krivi Potok, were frequently micropaleontologically and sedimentologically investigated in the previous years (PANTIĆ 1971; BUDUROV & PANTIĆ 1973, 1974; UROŠEVIĆ & SUDAR 1980; PANTIĆ-PRODANOVIĆ & RADOŠEVIĆ 1981; SUDAR 1986, etc.).

In the Krivi Potok section, for the study presented herein, was investigated and sampled for microfauna only 11 m thick rock section near to the mouth of this stream in the rivulet Štira and on the northern side of the Loznica–Zajača road (N 19°14'13.8", E 44°28'9.8"; figs. 1, 2). The field researches were undertaken in 2010 (samples SRB-1 and SRB-2) and 2012 (samples Kp1 – Kp7) years. The section (Fig. 3) consists of:

- Unit 1, bedded bioturbated limestones, 70 cm thick only with conodonts;

- Unit 2, bedded, sandy, ferruginous ooidal grainstone, 1 m thick, and only with conodonts;
- Unit 3, bioturbated micrites 30 cm thick with conodonts;
- Unit 4, *ca.* 5.5 m thick can be separated into the lower (4a) and upper part (4b) with covered part between. The lower part of this first entity of subunit 4a (*ca.* 3 m) is built of thick bedded limestones (beds are mostly 25 cm thick). Then, last 1 m is consisted of thin bedded laminated limestones (beds are less than 5 cm thick). Here in the subunit 4a are present abundant conodont and ostracode microfaunas, pyrite framboids (especially in sample SRB-1) and rare foraminifera. After covered 6 m, also to the same unit (subunit 4b) belongs 1.5 m thick part, mostly made of change of red and grey siltstones and sandstones, but in the upper part also contains sandy, ferruginous wackestone-packstone with one characteristic 20 cm thick bed of ooidal dolomitic limestones. Ooids are rare, sometimes filled with dolomite.

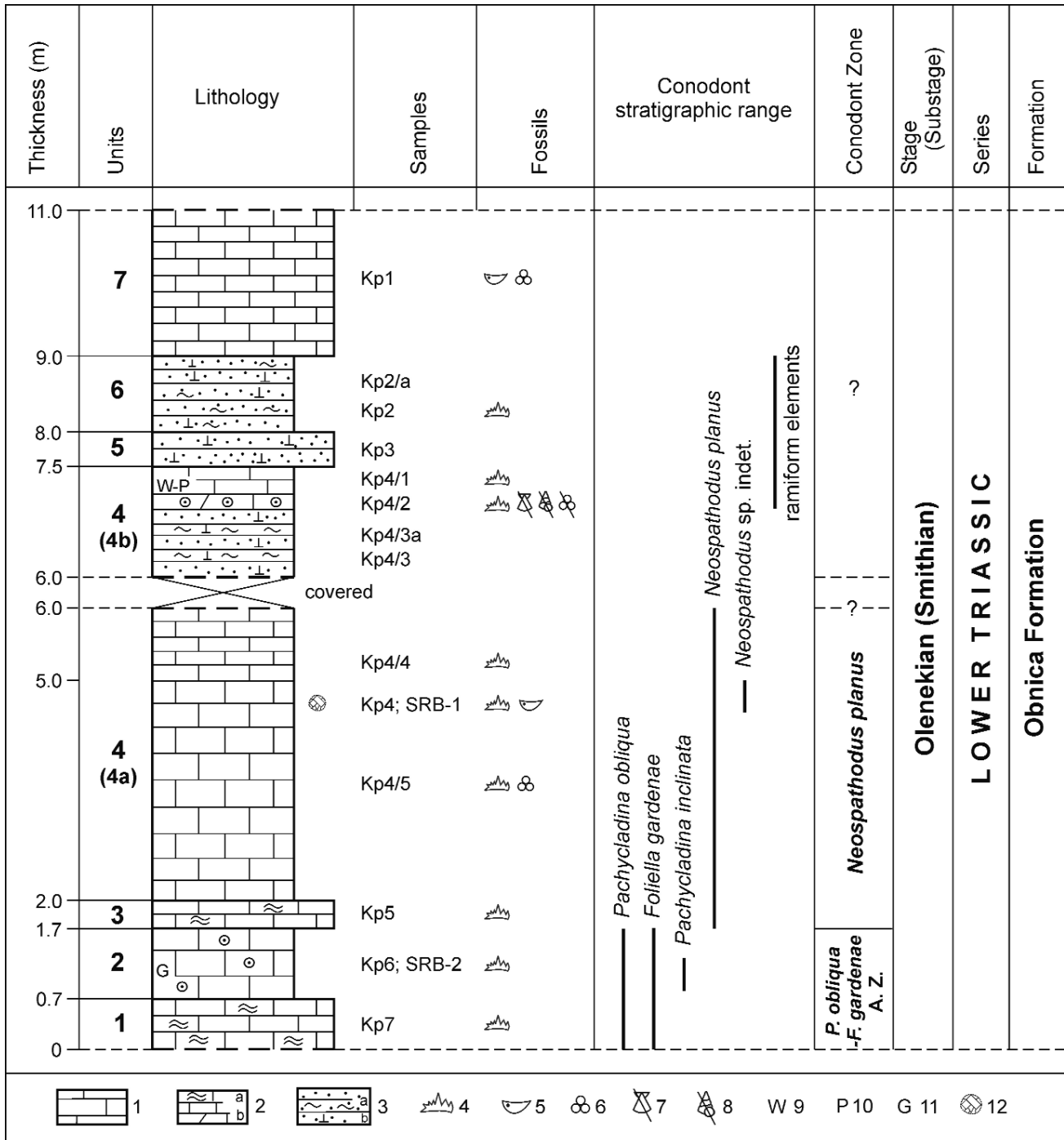


Fig. 3. Geological column, conodont stratigraphic ranges and zones of the Lower Triassic (Olenekian, Smithian) sediments in the Krivi Potok section on the Gučevo Mt. (Jadar Block, NW Serbia). Legend. **1**, thin to thick bedded limestones; **2**, bioturbated (a) and dolomitic (b) limestones; **3**, bedded quartz sandstones, silty (a) and calcareous (b); **4**, conodonts; **5**, ostracodes; **6**, foraminifera; **7**, detritus of bivalves; **8**, detritus of gastropods; **9**, wackestone; **10**, packstone; **11**, grainstone; **12**, pyrite framboids.

Beside conodonts, detritus of bivalves, gastropods, and foraminifera, also fine quartz grains and dispersed ferruginous matter characterize bed.

- Unit 5, quartz sandstones thick 0.5 m;
- Unit 6, thin bedded micaceous quartz sandstones 1 m thick, and

- Unit 7, made of grey, thin bedded, 2 m thick limestones (thickness of beds is 2–15 cm) with ostracodes and rare pyritized foraminifera. This unit make the final part of the section.

The deposition of the fine carbonate mud, characteristic for low energy regime of the shallow water,

relatively restricted environment, probably shallow subtidal (traces of bioturbations in lower part, fine laminated and thin bedded limestones in middle and upper part of the section) predominates in the section. Appearance of the bed with ooids in thin bioturbated micrites in lower part (Kp6; SRB-2) and also in 20 cm bed thick in subunit 4b (Kp4/2) with change of thin bedded siltstones and sandstones in lower part of subunit indicate high water energy. Possible explanation is existing of some topographic highs (normal relief or as a result of local tectonic uplift) were is water energy like in typical tidal regime, or occasionally influence of storm (wind) currents. In upper part of section (Kp3, Kp2, K2/a) is characteristic presence of siliciclastics input, caused by some local tectonic event or change of climate (ferruginous pigments in sediments).

## Conodont microfauna

### Material and methods

Fourteen composite rock samples, each *ca.* 2.5 kg, are collected from the Krivi Potok section for conodont study, and same number of thin sections were also done from each level with the conodont samples for the petrographic purposes. The laboratory work was carried out at Geological Survey of Slovenia. All samples were prepared using standard laboratory techniques: dissolved in diluted formic and acetic acid, after dissolution, the residue was collected, sieved and dried. High density liquid (*ca.* 2.8 g/cm<sup>3</sup>) is used for gravity enrichment; the density of conodont is larger than 2.8 g/cm<sup>3</sup>, while the density of most of the other residues is smaller than 2.8 g/cm<sup>3</sup>. The collected materials (samples, thin sections etc.) and collections of conodonts, ostracodes and pyrite framboids from investigated section are deposited in the Geological Survey of Slovenia under the catalogue numbers GeoZS 4768-4769 and 5104-5112, corresponding to numbers of the samples (SRB-1, SRB-2 and Kp1-Kp7) from the section. The illustrated pictures presented herein were taken with an Scanning Electron Microscope at the University of Graz, Nawi Graz, Institute of Earth Sciences.

### Conodont dating

Six samples out of these fourteen yield conodonts which enable taxonomic identification: P<sub>1</sub> elements of *Neospathodus planus* CHEN & KOLAR-JURKOVŠEK, P<sub>1</sub> elements of *Neospathodus* sp. indet., P<sub>2</sub>, S<sub>1</sub>, S<sub>2</sub>, S<sub>3</sub> or S<sub>4</sub> and M elements of multielement apparatus of *Neospathodus planus*, elements of the *Pachycladina-Foliella* conodont microfauna: *Pachycladina obliqua* STAESCHE, *Pachycladina inclinata* STAESCHE, *Foliella gardenae* (STAESCHE) and *Pachycladina* sp.

(Fig. 3). Other three samples from the upper part of the section contain only ramiform elements and some undetermined fragments of the conodonts (Fig. 3).

In the lower part of the presented Krivi Potok section, before the covered part of column, beside of stratigraphic ranges of determined conodonts, two conodont zones can be recognized. They confirm the conodont sequence which has been proposed in the Idrija-Žiri area, Slovenia (CHEN *et al.* in preparation). These zones are: *Pachycladina obliqua-Foliella gardenae* Assemblage Zone and *Neospathodus planus* Zone and both they are of the lowermost Olenekian (lower Smithian) in age (Fig. 3).

From the source part of the Krivi Potok, SUDAR (1986) reported the results of the micropaleontological investigations of conodonts and foraminifera where it was determined the *Parachirognathus-Furnishius* Z. in the Smithian and *triangularis-homeri*-C.R.Z. of the Spathian age.

### *Pachycladina obliqua-Foliella gardenae* Assemblage Zone

Originally is introduced by CHEN *et al.* (in preparation) in the type-section Žiri 29 of the Idrija-Žiri area, Slovenia as the *Pachycladina obliqua-Foliella gardenae* A. Z. in the interval between *Eurygnathodus costatus* and *Neospathodus planus* zones within the lower part of the Smithian (lowermost Olenekian).

In the Krivi potok locality the lower limit of this A. Z. lies on the beginning of the Unit 1 at the base of section. It is characterized by the first appearance of *Pachycladina obliqua* and *Foliella gardenae*. The upper limit of the Zone is marked with the first occurrence (FO) of *Neospathodus planus* in the Unit 3 at 1.7 m from the beginning of the section (Fig. 3).

In the investigated section of the Jadar Block the age of the Zone is the lower part of the Smithian in the lowermost Olenekian, and as associated conodont is present only *Pachycladina inclinata*.

This Assemblage Zone CHEN *et al.* (in preparation) roughly correlate with the stratigraphic range within the lower part of Smithian belonging to the *Parachirognathus-Furnishius* conodont fauna by SWEET *et al.* (1971) and BUDUROV & SUDAR (1995). They change only the name of the Zone according to the dominating presence of the species of the genera *Pachycladina* STAESCHE and *Foliella* BUDUROV & PANTIĆ what is also obvious in the Krivi potok section.

The same interval, characterized by dominating *Pachycladina obliqua* joined with elements of *Hadrodontina* STAESCHE, was in External Dinarides attributed to the *Pachycladina obliqua* Zone (KOLAR-JURKOVŠEK & JURKOVŠEK 1995, 1996, ALJINOVIĆ *et al.* 2006, 2011) and correlated to the Lower Smithian Zone 7 (*Parachirognathus-Furnishius* Zone) of SWEET *et al.* (1971). In North Italy, *Pachycladina*

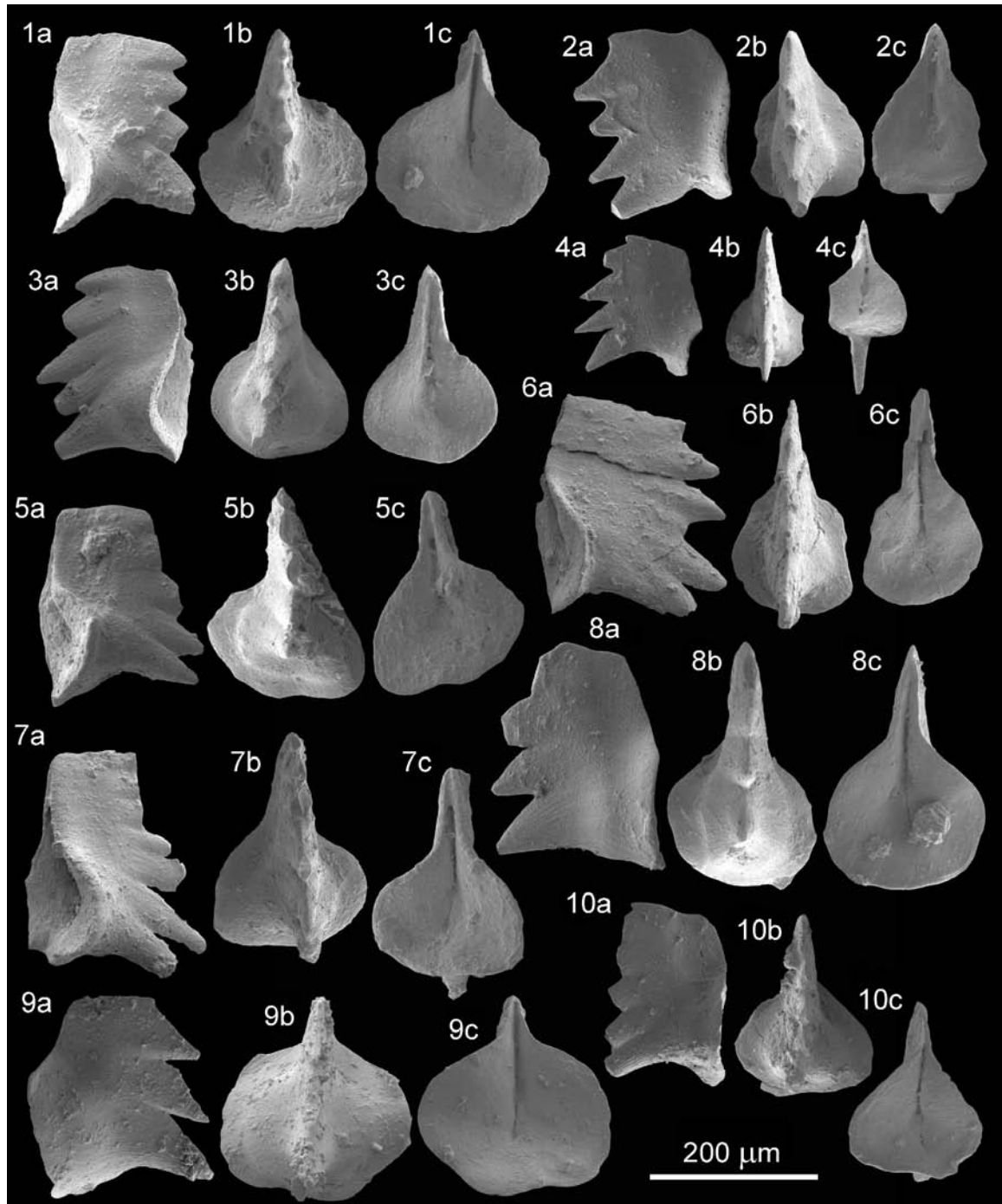


Fig. 4. Conodonts from the Krivi Potok Section, Gučevo Mt., Jadar Block, NW Serbia; middle part of the Obnica Formation, lowermost part of Olenekian (lower Smithian), *Neospathodus planus* Zone; a. lateral view; b. oral view; c. aboral view. **1–6.** P<sub>1</sub> elements of *Neospathodus planus* CHEN & KOLAR-JURKOVŠEK, sample SRB-1 (GeoZS 4768); **8–10.** P<sub>1</sub> elements of *Neospathodus planus* CHEN & KOLAR-JURKOVŠEK, sample KP4/4 (GeoZS 5108); **7.** P<sub>1</sub> elements of *Neospathodus* sp. indet., sample SRB-1 (GeoZS 4768).

*obliqua* Zone ranges within the almost whole Smithian and the Spathian (PERRI 1991).

In conodont zonation by BUDUROV & SUDAR (1995) exist the *Platyvillosus-Foliella* Beds with the range of both genera in the oldest parts of Spathian. ORCHARD (2007) indicated that species of the genera *Parachi-*

*rognathus* CLARK, *Furnishius* CLARK, *Hadrodontina*, *Pachycladina* or *Foliella*, belonging to the family Ellisoniidae, are not present in the Spathian, but nearly only in the same time interval of the lower and middle Smithian. These facts were applied by CHEN *et al.* (in preparation) when define *Pachycladina obli-*

*qua-Foliella gardenae* Assemblage Zone in the lower part of the Smithian.

### ***Neospathodus planus* Zone**

*Neospathodus planus* Zone was originally reported from the type-section Žiri 61 in the Idrija–Žiri region, Slovenia (CHEN *et al.*, in preparation), where it lies between *Pachycladina obliqua-Foliella gardenae* A. Z. and *Neospathodus robustus* Zone. It is lower Smithian in age.

In the presented locality on the Gučevó Mt. their lower limit is marked with the first appearance of *Neospathodus planus* without elements of genus *Pachycladina* and *Foliella gardenae*, in the Unit 3 at 1.7 m above the base of the section. The upper limit is set at the end of the first part of the Unit 4 (subunit 4a), because the strata after covered part of 6 m, contain only ramiform conodonts without stratigraphic importance (Fig. 3).

In the Krivi Potok section this stratigraphic interval characterizes the lower part of the Smithian (lowermost Olenekian) only with the occurrence of the taxa *Neospathodus planus* and *Neospathodus* sp. indet.

### **Taxonomic notes**

***Neospathodus planus* CHEN & KOLAR-JURKOVŠEK**  
Fig. 4.1–6, 8–10; Fig. 5.1, 2

$P_1$  elements of *Neospathodus planus* is characterized by 3–6 denticles and sometimes a large basal cavity that occupies almost the whole length of the unit (e.g., Fig. 4.9). The outer side of the basal cavity is always greatly expanded. It is similar to *Neospathodus robustus* KOIKE, but *Neospathodus robustus* commonly has more denticles, which are 6–10 (KOIKE 1982). *Neospathodus planus* can be differentiated from *Triassospathodus hungaricus* (KOZUR & MOSTLER) by much wider and inflated basal cavity, and by relatively longer and stronger unit. So far, it is only recognized from Slovenia and Serbia, and it could be a species controlled by local environment.

**Multielement apparatus of *Neospathodus planus***  
CHEN & KOLAR-JURKOVŠEK  
Fig. 4.1–6, 8–10; Fig. 5.1–8

The multielement apparatus of *Neospathodus planus* has also been discussed here, categories of conodont elements follow SWEET (1988), they are assigned to segminate, angulate, breviform, etc., and orientation of elements follows PURNELL *et al.* (2000).

Multielement apparatuses of conodont play an important role in the conodont taxonomy system (e.g.,

ORCHARD 2005), thus it is expected that conodont workers illustrate these ramiform elements together with  $P_1$  elements. Conodont clusters and nature assemblages have demonstrated that there are three types of apparatuses in the geological record of earth history, they comprise of 15, 17 and 19 elements respectively (ALDRIDGE *et al.* 2013). Early Triassic conodont composed mainly three families: Gondolellidae, Anchinathodontidae, and Ellisoniidae (ORCHARD, 2007), nature assemblages or clusters have shown that apparatuses of all these three families consist of 15 elements (RIEBER 1980; ORCHARD & RIEBER 1999, KOIKE *et al.* 2004, ORCHARD 2005, GOUEMAND *et al.* 2012, AGEMATSU *et al.* 2014), paired  $P_1$ ,  $P_2$ ,  $S_1$ ,  $S_2$ ,  $S_3$ ,  $S_4$  and M; unpaired  $S_0$ . ORCHARD (2005) has reconstructed 26 Triassic apparatuses, including several Early Triassic species, and all his apparatuses consist of 15 elements, belong to the family Gondolellidae. Later, GOUEMAND *et al.* (2012) revise these  $S_1$  and  $S_2$  elements of Gondolellidae apparatuses as occupied  $S_2$  and  $S_1$  position, the  $S_3$  and  $S_4$  elements of subfamily Novispathodinae (family Gondolellidae) occupied  $S_4$  and  $S_3$  position.

The monospecies *Neospathoides planus* in Zone of the same name provides a chance for the reconstruction its apparatus. Apart from  $P_1$  elements,  $P_2$ ,  $S_1$ ,  $S_2$ ,  $S_{3-4}$ , and M elements are also identified, as they are shown in Fig. 5.3–8. However,  $S_0$  element has been found from neither Krivi Potok section, Serbia nor the Idrija–Žiri section, Slovenia (CHEN *et al.*, in preparation).

Elements of *Neospathodus planus* are characterized as follow:  $P_2$  element is angulate, relatively slender, has a cusp in the middle part of the unit.  $S_1$  element is breviform digyrate, with well-developed rostral process, but lacks caudal-ventral process, the largest denticle located on the caudal end of the unit and caudally pointed. These characters of  $S_1$  elements are similar to that of many Triassic conodont species which are illustrated by ORCHARD (2005).  $S_2$  element is breviform digyrate, with a large rostral process but a very short caudal-lateral process which only bears 2 to 3 denticles. Only caudal part of the  $S_3$  or  $S_4$  element is found, as it is illustrated in Fig. 5.7, character of rostral part in not clear so far. M elements is also breviform digyrate, similar to  $S_1$  element, however, it has a short ventral process which bears one denticle. Over all, elements of *Neospathodus planus* show high similarity with elements of *Triassospathodus homeri* (BENDER) which are figured by ORCHARD (2005), especially for  $P_2$  and  $S_1$  elements. Since we lack well preserved  $S_3$  and  $S_4$  elements, their relationship can not be decided presently.

***Neospathodus* sp. indet.**  
Fig. 4.7

In the sample SRB-1 from the *Neospathodus planus* Zone in the Krivi potok section exists one speci-

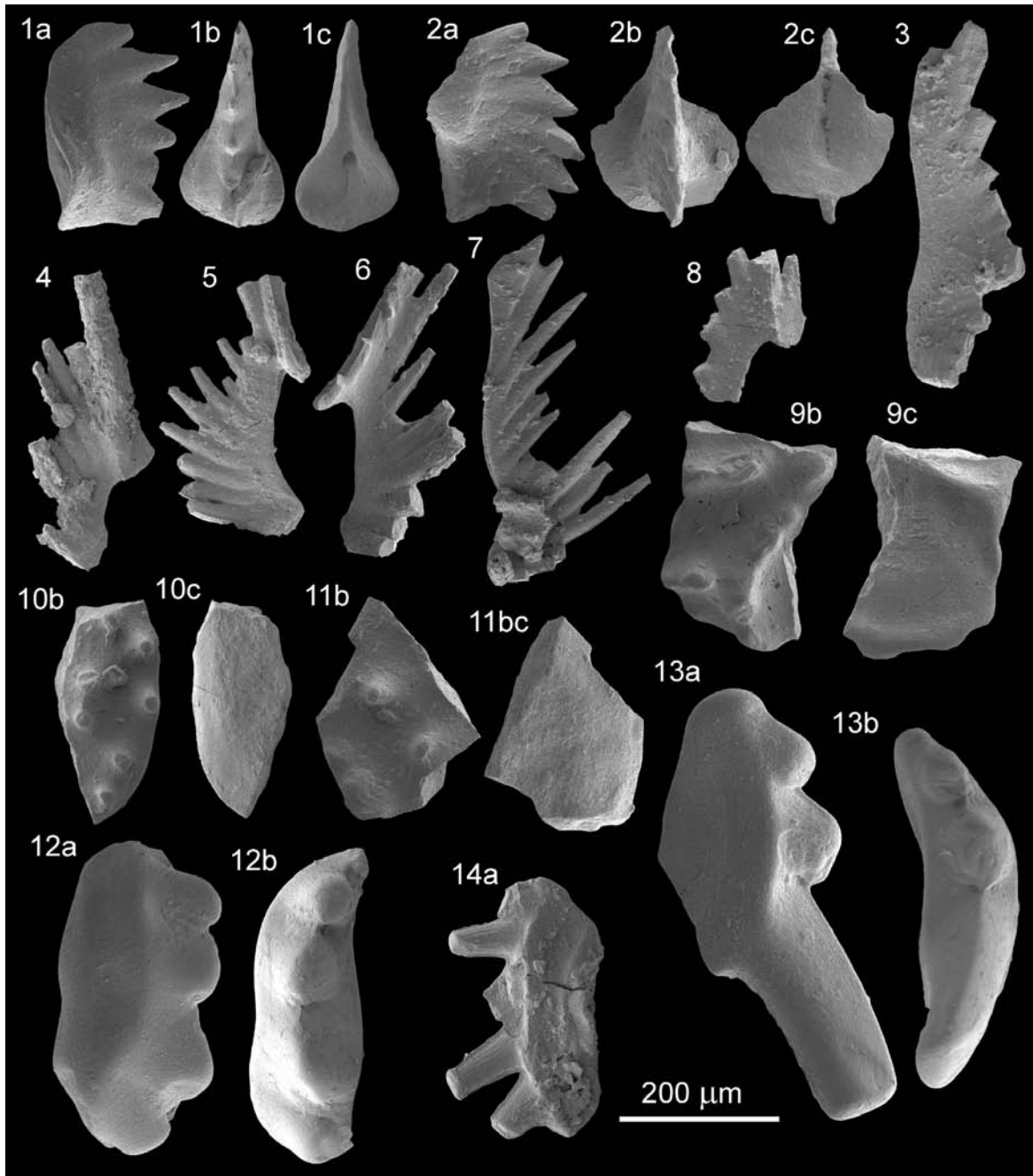


Fig. 5. Conodonts from the Krivi Potok Section, Gučevo Mt., Jadar Block, NW Serbia; middle part of the Obnica Formation, lowermost part of Olenekian (lower Smithian), *Neospathodus planus* Zone; a. lateral view; b. oral view; c. aboral view. **1, 2**, P<sub>1</sub> elements of *Neospathodus planus* CHEN & KOLAR-JURKOVŠEK, sample Kp4/5 (GeoZS 5109); **3-8**, P, M and S elements of *Neospathodus planus* CHEN & KOLAR-JURKOVŠEK, **3**, P<sub>2</sub> element, sample SRB-1 (GeoZS 4768). **4**, S<sub>1</sub> element, sample SRB-1, KP4/4 (GeoZS 4768, 5108). **5, 6**, S<sub>2</sub> elements, **5**, sample SRB-1 (GeoZS 4768), **6**, sample Kp4/4 (GeoZS 5108). **7**, distal part of S<sub>3</sub> or S<sub>4</sub> element, sample Kp4/4 (GeoZS 5108). **8**, M element, sample SRB-1 (GeoZS 4768). **9-14**, Elements of the *Pachycladina-Foliella* conodont microfauna from the *Pachycladina obliqua-Foliella gardenae* Assemblage Zone. **9-11**, *Foliella gardenae* (STAESCHE) (different fragments) sample SRB-2 (GeoZS 4769). **12**, *Pachycladina* sp., sample SRB-2 (GeoZS 4769). **13**, *Pachycladina obliqua* STAESCHE (fragment), sample SRB-2 (GeoZS 4769). **14**, *Pachycladina inclinata* STAESCHE, sample SRB-2 (GeoZS 4769).

men showing characters between *Neospathodus planus* and *Neospathodus robustus*. The ventral (anterior) part of the element lost some denticels, thus it is possible

the specimen has seven or more denticles which probably should be identified as *Neospathodus robustus*. In this moment, because of the bad preservation of the



fossil and since occur only one, illustrated, specimen it is determined in the open nomenclature like *Neospathodus* sp. indet.

#### Elements of the *Pachycladina–Foliella* conodont microfauna

The elements determined within this conodont microfauna, *Pachycladina obliqua*, *Pachycladina inclinata* and *Foliella gardenae* were first reported from the middle to upper part of Campil Member in North Italy (STAESCHE 1964) with higher stratigraphic distributions than *Eurygnathodus costatus* STAESCHE.

Both, species of *Pachycladina*, were also reported from North Italy (PERRI & ANDRAGHETTI 1987, PERRI 1991), Slovenia (KOLAR-JURKOVŠEK 1990, KOLAR-JURKOVŠEK & JURKOVŠEK 1995, 1996, DOZET & KOLAR-JURKOVŠEK 2007, CHEN *et al.* in preparation), Croatia (ALJINOVIĆ *et al.* 2006), Bosnia (ALJINOVIĆ *et al.* 2011), NW Serbia (BUDUROV & PANTIĆ 1973, 1974; SUDAR 1986), and South China (WANG & CAO 1981, YANG *et al.* 1986).

*Foliella gardenae* was also reported from different localities in Slovenia (KOLAR-JURKOVŠEK 1990, KOLAR-JURKOVŠEK & JURKOVŠEK 1995, 1996, CHEN *et al.* in preparation), Croatia (ALJINOVIĆ *et al.* 2006), NW Serbia (BUDUROV & PANTIĆ 1973, 1974), and South Primorye, Eastern Russia (ZAKHAROV *et al.* 2009, IGO 2009).

#### Conodont Colour Alteration Index

The Conodont Colour Alteration Index (CAI values *sensu* EPSTEIN *et al.* 1977) of the conodonts from the presented Krivi Potok section are in the range of CAI from 5 to 6–7 (5, 5.5, 6, 6–7), with the tendency that conodonts from the middle parts of the section (*Neospathodus planus* Zone) have the highest values of CAI. It is in correspondance to the earlier data of CAI values from the Krivi Potok section which are 5.5 (unpublished information for the conodonts determined by SUDAR 1986). All these mentioned data where CAI values are between 5 and 6–7 correspond to temperatures from 300–490 °C and characterize very low to low grade metamorphism (GAWLICK *et al.* 1994, SUDAR & KOVÁCS 2006).

#### Ostracode microfauna

From the fourteen samples treated for conodonts extraction, two were productive with ostracodes (SRB-1 and Kp1; Fig. 3). A total of fifty-nine specimens have been recovered, illustrating a new species described below. Most of the specimens are represented by complete carapaces, testifying the absence or limitation of

post-mortem transportation with low wave energy and/or rapid burial by high sedimentation ratio (OERTLI 1971).

During the earlier phases of micropaleontological investigations of the Lower Triassic and P-T boundary interval in the Jadar Block were published only few papers dealing with ostracodes: PANTIĆ-PRODANOVIĆ (1979), KRSTIĆ (1980) and CRASQUIN *et al.* (2010). In paper of PANTIĆ-PRODANOVIĆ (1979), only five species of ostracodes were cited (three in open nomenclature) from „Campilan” substage in the Valjevo area. In the southern and eastern slopes of the Gučevo Mt., KRSTIĆ (1980) in detail described and illustrated rich ostracode microfauna of the „Campilan” age: *Judahella tsorfatia*, „*Cultella*” cf. *laevis*, *Spinocypris nepalensis*, „*Bythocypris*” aff. *bijieensis*, *Bythocypris* cf. *pricei*, etc. Studying very abundant ostracode assemblages not found earlier in the P–T beds of this region, CRASQUIN *et al.* (2010) also introduced three new species. All together, were the first record of the youngest Upper Permian age microfaunas not only from NW Serbia, but also from the whole Serbia and the central part of the Balkan Peninsula.

In the present study, we follow the systematic classification of MOORE (1961) modified after LETHIERS (1981) and HORNE *et al.* (2002).

Abbreviations used in the text: AB, anterior border; DB, dorsal border; H, height; H<sub>max</sub>, maximal height; L, length; L<sub>max</sub>, maximal length; LV, left valve; PB, posterior border; RV, right valve; VB, ventral border.

Class Ostracoda LATREILLE, 1806  
Subclass Podocopa MÜLLER, 1894  
Order Podocopida MÜLLER, 1894  
Suborder Podocopina SARS, 1866  
Superfamily Cypridoidea BAIRD, 1845  
Family Paracyprididae SARS, 1923

Genus *Paracypris* SARS, 1910

**Type species.** *Paracypris polita* SARS, 1866

*Paracypris ? krivipotokensis* FOREL n. sp.  
Fig. 6.1–6

**Derivation of name.** From the type locality, Krivi Potok section.

**Holotype.** One complete carapace figured on Fig. 6.1, sample SRB-1, collection number GeoZS 4768.

**Paratype.** One complete carapace figured on Fig. 6.2, sample SRB-1, collection number GeoZS 4768.

**Type locality.** Krivi Potok section, Gučevo Mt., Jadar Block, Northwestern Serbia.

**Type level.** Unit 4 (4a), sample SRB-1, Obnica Formation of the Krivi Potok section, Upper Lower Triassic, lowermost part of Olenekian (lower Smithian), *Neospathodus planus* conodont Zone.

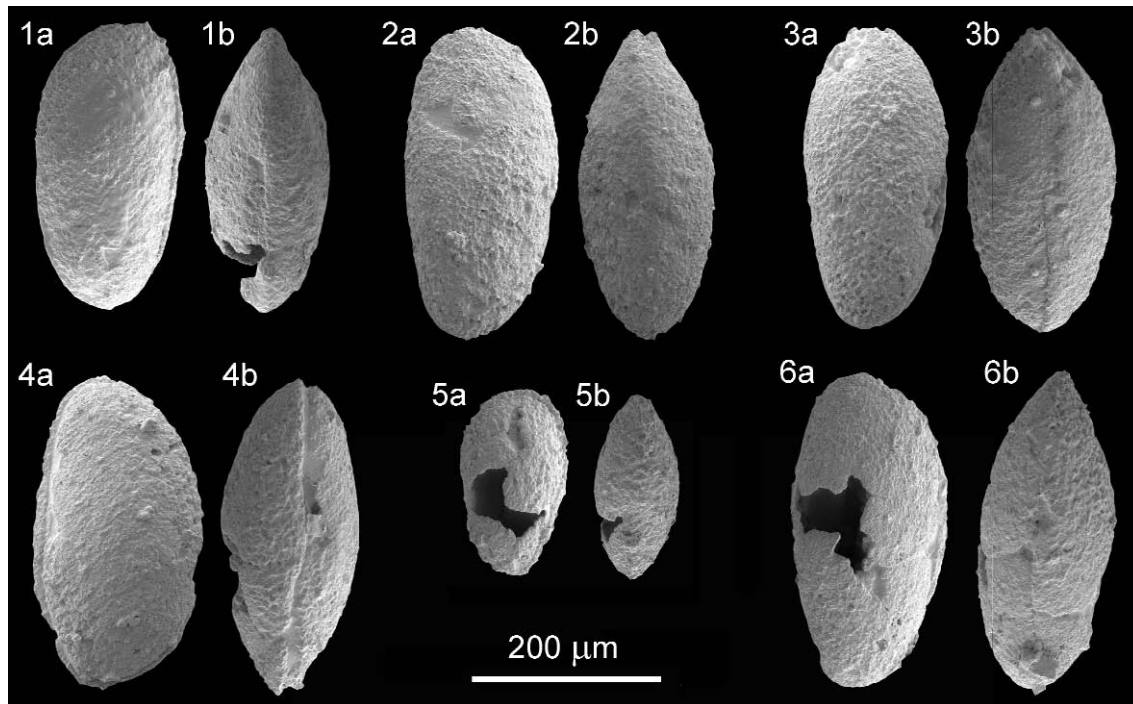


Fig. 6. Ostracodes from the Krivi Potok Section, Gučevo Mt., Jadar Block, NW Serbia; middle part of the Obnica Formation, lowermost part of Olenekian (lower Smithian), *Neospathodus planus* conodont Zone; a. lateral view; b. dorsal view of a complete carapace. All specimens belong to *Paracypris* ? *krivipotokensis* FOREL n. sp. **1**, holotype, carapace, sample SRB-1 (GeoZS 4768). **2**, paratype, carapace, sample SRB-1 (GeoZS 4768). **3**, carapace, sample SRB-1 (GeoZS 4768). **4**, carapace, sample SRB-1 (GeoZS 4768). **5**, carapace, sample SRB-1 (GeoZS 4768). **6**, carapace, sample SRB-1 (GeoZS 4768).

**Material.** Fifty-nine complete carapaces and several fragments.

**Diagnosis.** A species attributed with doubt to the genus *Paracypris*, with AB and PB maximum of convexity symmetrically located in the lower 1/3<sup>rd</sup> of the carapace, upper portion of AB straight.

**Description.** Carapace elongate ( $0.48 < H/L < 0.58$ ), surface smooth, LV slightly overlaps RV all around the carapace.

DB long (50–65% of  $L_{max}$ ), regularly convex, smoothly sloping to PB; PB rounded with narrow radius of curvature, maximum located in the lower 1/3<sup>rd</sup> of  $H_{max}$ ; posterior half of the carapace slightly wedge-shaped; VB flat to slightly concave at both valves; upper part of AB long and straight to slightly convex, resulting in a shouldering of the transition to VB larger than PB: anterior maximum of convexity located symmetrically to PB in the lower 1/3<sup>rd</sup> of  $H_{max}$ .

**Remarks.** The present species differs from *Paracypris gaetanii* CRASQUIN-SOLEAU from the Griesbachian? of the Guangxi Province, South China (CRASQUIN-SOLEAU *et al.* 2006) by its asymmetrical and shouldered AB with maximum of convexity located in the lower 1/3<sup>rd</sup> of  $H_{max}$ . It differs from the species *Paracypris jinyaensis* CRASQUIN-SOLEAU from the Smithian-Spathian of the Guangxi Province, South China (CRASQUIN-SOLEAU *et al.* 2006) by its larger H/L ratio. The abundant specimens of *Paracypris gaetanii*

CRASQUIN-SOLEAU from the Late Permian–Early Triassic of several localities worldwide recently allowed the recognition of five ontogenetic stages (FOREL 2014). The specimens might correspond to at least two ontogenetic stages but more material is needed to confirm this hypothesis.

Until now, eleven Smithian ostracode species were known from South China (CRASQUIN-SOLEAU *et al.* 2006) and Tibet (FOREL *et al.* 2011; FOREL & CRASQUIN 2011). *Paracypris* ? *krivipotokensis* FOREL n. sp. is the first record of Smithian ostracodes on the north-

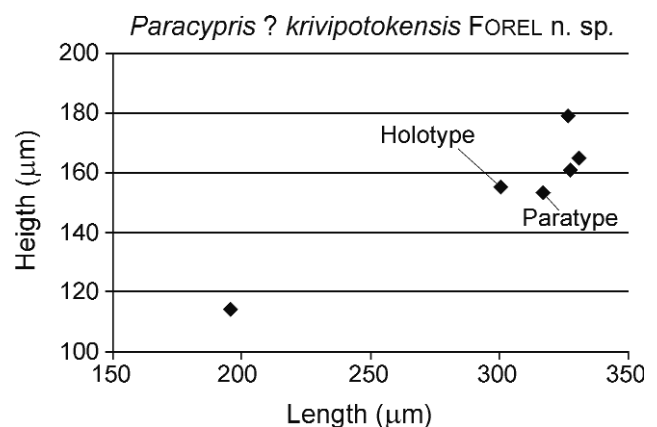


Fig. 7. Length/height scatter plot of *Paracypris* ? *krivipotokensis* FOREL n. sp.

ern border of the Paleo-Tethys ocean. The absence of ostracodes from twelve of the fourteen samples can't be interpreted in terms of environmental/ecological forcing since diluted formic and acetic acids were used: acid attack of the carbonated carapaces of ostracods can't be ruled out. A traditional hot acetolysis (LETHIERS & CRASQUIN-SOLEAU 1988; CRASQUIN-SOLEAU *et al.* 2005) processing of the samples might help have a more complete view of the Krivi Potok ostracode faunas and their implications in terms of environmental conditions.

**Size.** L=196–331  $\mu\text{m}$ ; H=114–179  $\mu\text{m}$ ; W=90–156  $\mu\text{m}$ ; H/L=0.48–0.58 (Fig. 7).

**Occurrence.** Lowermost part of Olenekian (lower Smithian) of the Krivi Potok section, Gučevo Mt., Jadar Block, Northwestern Serbia.

### Pyrite framboids

Plentiful studies indicate that this kind of pyrite can be a proxy for redox conditions in the paleoseawater

and sediments (e.g., WILKIN & BARNES 1996; SHEN *et al.* 2007; WIGNALL *et al.* 2005; TIAN *et al.* 2014). They form in dysoxic and sulfidic conditions which is close to the redox boundary (WILKIN & BARNES 1996). The diameters of pyrite framboids are very sensitive to the water depth between the redox boundary and the sediments, as they sink down rapidly after formation if they are formed in the water column and thus smaller (< 6  $\mu\text{m}$  in diameter) and has a narrower size variation range (WILKIN & BARNES 1997; WIGNALL & NEWTON 1998; WIGNALL *et al.* 2005). However, larger sized and wider range of size variation of pyrite framboids indicate a formation within the sediments, as they have longer time and slower rate for their formation (WILKIN & BARNES 1996, 1997).

Pyrite framboids have been found in Unit 4 (subunit 4a, sample SRB-1) in the Krivi Potok section. This is the first discovery of pyrite framboids from the Lower Triassic of the Jadar Block and also from Serbia. They are attached on the ostracode shells and are mainly 12–21  $\mu\text{m}$  in diameter, as shown in Fig. 8. These large amount of pyrite framboids found

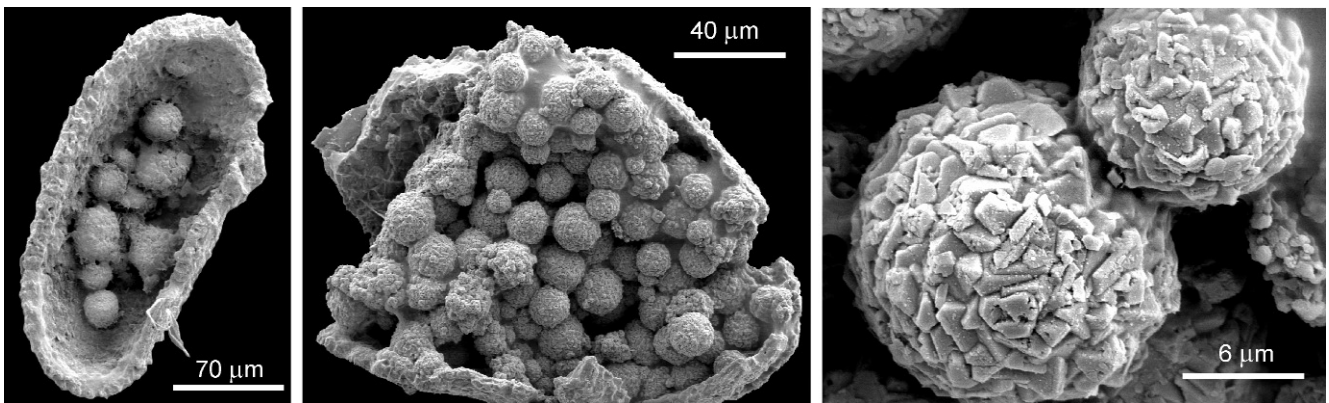


Fig. 8. Pyrite framboids from the Krivi Potok section, Gučevo Mt., Jadar Block, NW Serbia; middle part of the Obnica Formation, lowermost part of the Olenekian (lower Smithian), *Neospathodus planus* conodont Zone; sample SRB-1 (GeoZS 4768).

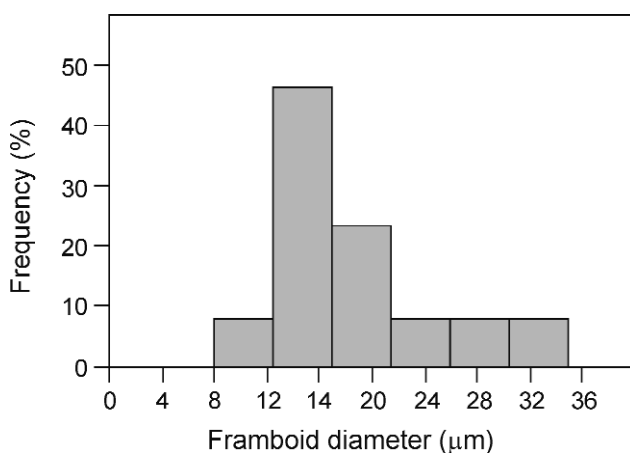


Fig. 9. Size distributions of pyrite framboids, sample SRB-1.

within ostracode shells definitely formed in the sediments after the death of these ostracodes. Their size distribution (8–35  $\mu\text{m}$ , Fig. 9) supports the former suggestion that the large pyrite framboids are not suitable for the diagnosis of the paleoseawater redox condition, but they only indicate a dysoxic and sulfidic micro-environment within the shells after the death of these ostracodes.

### Acknowledgements

Field works for this study were carried out in a frame of scientific research cooperation between the Republic of Slovenia and Republic of Serbia (BI-RS/12-13-030). Elaboration of this work was partly supported by Research

Agency of Slovenia (program P1-0011). This is contribution to international project IGCP 630 „Permian-Triassic Climatic and Environmental Extremes and biotic responses”.

The research of MILAN SUDAR and DIVNA JOVANOVIĆ was supported by the Ministry of Education, Science and Technical Development of the Republic of Serbia (Project ON-176015). YANLONG CHEN acknowledges Dr. SYLVAIN RICHOSZ and Prof. Dr. WERNER E. PILLER for supervision in University of Graz.

Authors thank to PLATON TCHOUMATCENKO (Sofia, Bulgaria) and anonymous reviewer for the critical and constructive comments.

## References

- AGEMATSU, S., SANO, H. & SASHIDA, K. 2014. Natural assemblages of *Hindeodus* conodonts from a Permian-Triassic boundary sequence, Japan. *Palaeontology*, doi: 10.1111/pala.12114.
- ALDRIDGE, R.J., MURDOCK, D.E., GABBOTT, S.E. & THERON, J.N. 2013. A 17-element conodont apparatus from the Soom Shale Lagerstätte (Upper Ordovician), South Africa. *Palaeontology*, 56 (2): 261–276.
- ALJINOVIĆ, D., KOLAR-JURKOVŠEK, T. & JURKOVŠEK, B., 2006. The lower Triassic shallow marine succession in Gorski Kotar region (External Dinarides, Croatia): Lithofacies and conodont dating. *Rivista Italiana di Paleontologia e Stratigrafia*, 112 (1): 35–53.
- ALJINOVIĆ, D., KOLAR-JURKOVŠEK, T., JURKOVŠEK, B. & HRVATOVIĆ H. 2011. Conodont dating of the Lower Triassic sedimentary rocks in the external Dinarides (Croatia and Bosnia and Herzegovina). *Rivista Italiana di Paleontologia e Stratigrafia*, 117 (1): 135–148.
- BUDUROV, K. & PANTIĆ, S. 1973. Conodonten aus den Campiller Schichten von Brassina (Westserbien) II. Systematischer teil. *Bulletin of the Geological Institute, Bulgarian Academy of Sciences, Series Paleontology*, 22: 49–64.
- BUDUROV, K. & PANTIĆ, S. 1974. Conodonten aus den Campiller Schichten von Brassina (Westserbien) I. Stratigraphie und Conodonten-Zonen. *Bulletin of the Geological Institute, Bulgarian Academy of Sciences, Series Paleontology*, 23: 105–113.
- BUDUROV, K. & SUDAR, M. 1995. Lower Triassic conodont stratigraphy. *Geologica Balcanica*, 25 (3–4): 97–109.
- CRASQUIN, S., SUDAR, M.N., JOVANOVIĆ, D. & KOLAR-JURKOVŠEK T. 2010. Upper Permian ostracode assemblage from the Jadar Block (Vardar Zone, NW Serbia). *Geološki anali Balkanskoga poluostrva*, 71: 23–35.
- CRASQUIN-SOLEAU, S., VASLET, D. & LE NINDRE, Y.M. 2005. Ostracods from Permian-Triassic boundary in Saudi Arabia (Khuff Formation). *Palaeontology*, 48: 853–868.
- CRASQUIN-SOLEAU, S., GALFETTI, T., BUCHER, H. & BRAYARD, A. 2006. Early Triassic ostracods from Guangxi Province, South China. *Rivista Italiana di Paleontologia e Stratigrafia*, 112: 55–75.
- CHEN, Y.L., KOLAR-JURKOVŠEK, T., JURKOVŠEK B., RICHOSZ, S. & ALJINOVIĆ. D. (in preparation). A unique Early Triassic conodont sequence from Idrija–Žiri area, Slovenia and its implications for conodont ecology.
- DOZET, S. & KOLAR-JURKOVŠEK, T. 2007. Lower Triassic beds in the southeastern borderland of the Ljubljana depression, central Slovenia. *RMZ – Materials and Geoenvironment*, 54 (3): 361–386.
- EPSTEIN, A.G., EPSTEIN, J.B. & HARRIS, L.D. 1977. Conodont Color Alteration – an Index to Organic Metamorphism. *U.S. Geological survey Professional Paper*, 995: 1–27.
- FILIPOVIĆ, I., JOVANOVIĆ, D., SUDAR, M., PELIKAN, P., KOVÁCS, S., LESS, GY. & HIPS, K. 2003. Comparison of the Variscan – Early Alpine evolution of the Jadar Block (NW Serbia) and “Bükkium” (NE Hungary) terranes; some paleogeographic implications. *Slovak Geological Magazine*, 9, 1: 23–40.
- FOREL, M.B. 2014. Heterochronic growth of ostracods (Crustacea) from microbial deposits in the aftermath of the end-Permian extinction. *Journal of Systematic Palaeontology* doi.org/10.1080/14772019.2014.902400.
- FOREL, M.B. & CRASQUIN, S. 2011. In the aftermath of Permian-Triassic boundary mass extinction: ostracod new species and genus from South Tibet. *Geodiversitas*, 33 (2): 247–263.
- FOREL, M.B., CRASQUIN, S., BRÜHWILER, T., GOUEMAND, N., BUCHER, H. & BAUD, A. 2011. Ostracod recovery after Permian - Triassic boundary mass-extinction in South Tibet. *Palaeogeography, Palaeoclimatology, Palaeoecology*, 308: 160–170.
- GAWLICK, H.-J., KRYSSTYN, L. & LEIN, R. 1994. Conodont colour alteration indices: Palaeotemperatures and metamorphism in the Northern Calcareous Alps – a general view. *Geologische Rundschau*, 83 (1): 660–664.
- GOUEMAND, N., ORCHARD, M.J., TAFFOREAU, P., URDY, S., BRÜHWILER, T., BRAYARD, A., GALFETTI, T. & BUCHER, H., 2012. Early Triassic conodont clusters from South China: Revision of the architecture of the 15 element apparatuses of the superfamily Gonolelloidea. *Palaeontology*. 55 (5): 1021–1034.
- HORNE, D.J., COHEN, A. & MARTENS, K. 2002. Taxonomy, Morphology and Biology of Quaternary and living Ostracoda. In: HOLMES, J.A. & CHIVAS, A. (Eds.), *The Ostracoda: applications in Quaternary Research. Geophysical Monograph, American Geophysical Union*, Washington DC: 5–36.
- IGO, H., 2009. Conodont succession. In: SHIGETA, Y., ZAKHAROV, Y., MAEDA, H. & POPOV, A.M. (Eds.), *The Lower Triassic system in the Abrek Bay Area, South Primorye, Russia. National Museum of Nature and Science*, Tokyo, 218 pp.
- KARAMATA, S. 2006. The geological development of the Balkan Peninsula related to the approach, collision and compression of Gondwanan and Eurasian units. In: ROBERTSON, A.H.F. & MOUNTRAKIS, D., (Eds.), *Tectonic Development of the Eastern Mediterranean Region*, Geological Society, London, Special Publications, 260: 155–178.

- KARAMATA, S., OLUJIĆ, J., PROTIĆ, L.J., MILOVANOVIĆ, D., VUJNOVIĆ, L., POPEVIĆ, A., MEMOVIĆ, E., RADOVANOVIĆ, Z. & RESIMIĆ-ŠARIĆ K. 2000. The Western Belt of the Vardar Zone - the remnant of a marginal sea. In: KARAMATA, S. & JANKOVIĆ, S. (Eds.), *Proceedings of the International Symposium "Geology and Metallogeny of the Dinarides and the Vardar Zone"*, Academy of Sciences and Arts of the Republic of Srpska, Collections and Monographs, I, Department of Natural, Mathematical and Technical Sciences, I: 131-135.
- KOLAR-JURKOVŠEK, T. 1990. Smithian (Lower Triassic) conodonts from Slovenia, NW Yugoslavia. *Neues Jahrbuch für Geologie und Paläontologie, Monatshefte*, H.9: 536-546.
- KOLAR-JURKOVŠEK, T. & JURKOVŠEK, B. 1995. Lower Triassic conodont fauna from Tržič (Karavanke Mts., Slovenia). *Eclogae geologicae Helvetiae*, 88 (3): 789-801.
- KOLAR-JURKOVŠEK, T. & JURKOVŠEK, B. 1996. Contribution to the knowledge of the Lower Triassic conodont fauna in Slovenia. *Razprave IV. Razreda SAZU*, XXXVII (1): 3-21.
- KOIKE, T. 1982. Triassic Conodont Biostratigraphy in Kedah West Malaysia. In: KOBAYASHI, T., TORIYAMA, R. & HASHIMOTO, W., (Eds.), *Geology and Paleontology of Southeast Asia 1982*, 23: 9-51, University of Tokyo Press.
- KOIKE, T., YAMAKITA, S. & KADOTA, N. 2004. A natural assemblage of *Ellisonia* sp. cf. *E. triassica* Müller (Vertebrata: Conodonta) from the uppermost Permian in the Suzuka Mountains, central Japan. *Paleontological Research*, 8: 241-253.
- KRSTIĆ, N. 1980. The Lower Triassic ostracodes of Gučevo. *Zapiski Srpskog geološkog društva za 1979 godinu* (Vanredni zbor 24. I 1980), 203-208 (in Serbo-Croatian, English summary).
- LETHIERS, F. 1981. Ostracodes du Dévonien terminal de l'Ouest du Canada: Systématique, biostratigraphie et paléoécologie. *Geobios*, 5: 1-234.
- LETHIERS, F. & CRASQUIN-SOLEAU, S. 1988. Comment extraire des microfossiles à tests calcitiques de roches calcaires dures. *Revue de Micropaléontologie*, 31: 56-61.
- MOJSILOVIĆ, S., FILIPOVIĆ, I., RODIN, V., NAVALA, M., BAKLAIĆ, D., DJOKOVIĆ, I., JOVANOVIĆ, Č., ŽIVANOVIĆ, D., EREMIJA, M. & CVETKOVIĆ, B. 1975. Basic Geological Map of SFRY, 1:100,000, Sheet Zvornik (L 34-123), *Savezni geološki zavod*, Beograd (*Zavod za geološka i geofizička istraživanja*, Beograd, 1960-1968; *Institut za geološka istraživanja*, Sarajevo, 1967).
- MOORE, R.C. (Ed.) 1961. *Treatise on Invertebrate Paleontology. Arthropoda 3, Crustacea, Ostracoda*. Geological Society of America and University of Kansas Press, Boulder and Lawrence, 442 pp.
- NESTELL, G.P., SUDAR, M., JOVANOVIĆ, D. & KOLAR-JURKOVŠEK, T. 2009. Latest Permian foraminifers from the Vlašić Mountain area, northwestern Serbia. *Micro-paleontology*, 55 (5): 495-513.
- OERTLI, H.J. 1971. The aspect of Ostracode fauna - a possible new tool in petroleum sedimentology. In: OERTLI, H.J., (Eds.), *Paléoécologie des Ostracodes. Bulletin du Centre de Recherche SNPA 1981*, 5 (Supplement): 137-151.
- ORCHARD, M.J. 2005. Multielement conodont apparatuses of Triassic Gondolelloidea, In: PURNELL, M.A. & DONOGHUE, P.C.J. (Eds.), *Special Papers in Palaeontology*, 73: 73-101.
- ORCHARD, M.J. 2007. Conodont diversity and evolution through the latest Permian and Early Triassic upheavals. *Palaeogeography, Palaeoclimatology, Palaeoecology*, 252: 93-117.
- ORCHARD, M.J. & RIEBER, H. 1999. Multielement *Neogondolella* (Conodonta, upper Permian - middle Triassic). *Bolletino della Societa Paleontologica Italiana*, 37 (2-3): 475-488.
- PANTIĆ, S. 1971. Conodontes Triassiques d'une partie des Dinarides et des Carpates Yougoslaves. *Acta Geologica Academiae Scientiarum Hungaricae*, 15: 231-242.
- PANTIĆ-PRODANOVIĆ, S. 1979. Triassic of the Valjevo area. *Excursion guide, VII International Symposium on Ostracodes, Serbian Geological Society*, 13-15, Belgrade.
- PANTIĆ-PRODANOVIĆ, S. & RADOŠEVIĆ, B. 1981. Biostratigraphic and sedimentologic characteristics of Upper Permian and Lower Triassic sediments in the Gučevo Mt. area, Yugoslavia. *Acta Geologica Academiae Scientiarum Hungaricae*, 24 (1): 99-115.
- PERRI, M.C. 1991. Conodont biostratigraphy of the Werfen Formation (Lower Triassic), Southern Alps, Italy. *Bolletino della Societa Paleontologica Italiana*, 30 (1): 23-46.
- PERRI, M.C. & ANDRAGHETTI, M. 1987. Permian-Triassic boundary and Early Triassic conodonts from the southern Apls, Italy. *Rivista Italiana di Paleontologia e Stratigrafia*, 93 (3): 291-328.
- PURNELL, M.A., DONOGHUE, P.C.J. & ALDRIDGE, R.J. 2000. Orientation and anatomical notation in conodonts. *Journal of Paleontology*, 74: 113-122.
- RIEBER, H. 1980. Ein conodonten-cluster aus der Grenzbitumenzone (Mittlere Trias) des Monte San Giorgio (Kt. Tessin/Schweiz). *Annalen des Naturhistorischen Museums in Wien*, 83: 256-274.
- SHEN, W., LIN, Y., XU, L., LI, J., WU, Y. & SUN, Y. 2007. Pyrite framboids in the Permian-Triassic boundary section at Meishan, China: Evidence for dysoxic deposition. *Palaeogeography, Palaeoclimatology, Palaeoecology*, 253: 323-331.
- STAESCHE, U. 1964. Conodonten aus dem Skyth von Südtirol. *Neues Jahrbuch für Geologie und Paläontologie, Abhandlungen*, 119, 3: 247-306.
- SUDAR, M.N. 1986. Triassic microfossils and biostratigraphy of the Inner Dinarides between Gučevo and Ljubišnja Mts., Yugoslavia. *Geološki anali Balkanskoga poluostrva*, 50: 151-394 (in Serbo-Croatian, English summary).
- SUDAR, M., JOVANOVIĆ, D. & KOLAR-JURKOVŠEK, T. 2007. Late Permian conodonts from Jadar Block (Vardar Zone, northwestern Serbia). *Geologica Carpathica*, 58 (2): 145-152.

- SUDAR, M.N. & KOVÁCS, S. 2006. Metamorphosed and Ductilely Deformed Conodonts from Triassic Limestones Situated Beneath Ophiolite Complexes: Kopaonik Mt., Serbia and Bükk Mts., NE Hungary. A Preliminary Comparison. *Geologica Carpathica*, 57 (3): 157–176.
- SWEET, W.C., MOSHER, L.C., CLARK, D.L., COLLINSON, J.W. & HASENMUELLER, W.A. 1971. Conodont Biostratigraphy of the Triassic. In: SWEET, W.C. & BERGSTROM, S.M., *Symposium on Conodont Biostratigraphy. The Geological Society of America, Memoir*, 127 (1970): 441–465, Boulder, Colorado.
- SWEET, W.C. 1988. The Conodonta: Morphology, Taxonomy, Paleoecology and Evolutionary History of a Long Extinct Animal Phylum. *Oxford Monographs in Geology and Geophysics*, 10: 1–212, Oxford University Press, New York, Oxford.
- TIAN, L., TONG, J.N., ALGEO, T.J., SONG, H.J., SONG, H.Y., CHU, D.L., SHI, L. & BOTTJER, D.J. 2014. Reconstruction of Early Triassic ocean redox conditions based on framboidal pyrite from the Nanpanjiang Basin, South China. *Palaeogeography, Palaeoclimatology, Palaeoecology*, 412: 68–79.
- UROŠEVIĆ, D. & SUDAR, M. 1980. Triassic microfossils in the area of the Mountain Gučevo. U: ANĐELKOVIĆ, M. (ur.), *Simpozijum iz regionalne geologije i paleontologije (Beograd, 16, 17 XII 1980)*, *Zavod za regionalnu geologiju i paleontologiju, Rudarsko-geološki fakultet, Univerzitet u Beogradu*, 491–507, Beograd (in Serbo-Croatian, English summary).
- WANG, Z.H. & CAO, Y.Y. 1981. Early Triassic conodonts from Lichuan, Western Hubei. *Acta Micropalaeontologica Sinica*, 20 (4): 363–375.
- WILKIN, R.T. & BARNES, H.L. 1996. Pyrite formation by reactions of iron monosulfides with dissolved inorganic and organic sulfur species. *Geochimica et Cosmochimica Acta*, 60 (21): 4167–4179.
- WILKIN, R.T. & BARNES, H.L. 1997. Formation processes of framboidal pyrite. *Geochimica et Cosmochimica Acta*, 61 (2): 323–339.
- WIGNALL, P.B. & NEWTON, R. 1998. Pyrite framboid diameter as a measure of oxygen deficiency in ancient mudrocks. *American Journal of Science*, 298: 537–552.
- WIGNALL, P.B., NEWTON, R. & BROOKFIELD, M.E. 2005. Pyrite framboid evidence for oxygen-poor deposition during the Permian–Triassic crisis in Kashmir. *Palaeogeography, Palaeoclimatology, Palaeoecology*, 216: 183–188.
- YANG, S.R., WANG, X. & HAO W.C. 1986. Early and Middle Triassic conodonts sequence in Western Guangxi. *Acta Scientiarum Naturalium Universitatis Pekinensis*, 4: 90–106.
- ZAKHAROV, Y.D., SHIGETA, Y. & IGO, Y. 2009. Correlation of the Induan–Olenekian boundary beds in the Tethys and Boreal realm: evidence from conodont and ammonoid fossils. *Albertiana*, 37: 20–27.

## Резиме

### Микрофауна доњег тријаса (олењок) Јадарског блока (планина Гучево, СЗ Србија)

Област планине Гучево (Јадарски блок, северо-западна Србија) је прилично палеонтолошки неистражена, нарочито кад су у питању стене доњотријаске старости, раније третиране као „сајски“ и „кампилски“ кластити и карбонати. Комплекснија истраживања на овим просторима вршена су тек последњих година и то у седиментима на граници горњи перм–доњи тријас (SUDAR *et al.* 2007, NESTELL *et al.* 2009, CRASQUIN *et al.* 2010), али су настављена и на седименте доњотријаске старости Формације Обнице.

У региону планине Гучева, на локалитету Криви поток који се налази у доњем делу истоименог потока, у седиментима доњег тријаса снимљен је стуб дебљине 11 m. Опробовање је вршено у два маха (2010. и 2012. године). Стуб се састоји из седам пакета, у прва три пакета изграђена од танко слојевитих микритских кречњака је присутан ооидни кречњак дебљине 1 m (Кр6, SRB-2). Четврти пакет је делом покривен, па је подељен у два дела. У целом доњем делу (4a) обилује конодонтима, а остракоди и пиритски фрамбоиди су нарочито присутни у дебело банковитим кречњацима (Кр4, SRB-1). У горњем делу пакета у слоју дебљине 0,2 m такође су нађени ооиди. Пакете 5 и 6 изграђују кварцни пешчари, а преко њих је пакет 7 изграђен од слојевитих кречњака различите дебљине. Депозиција се углавном одвијала у плитком субтајдалу, у ниско енергетском режиму, али присуство ооида, карактеристично за плимни режим, указује на постојање топографских узвишица на терену што је узроковано нормалним рељефом или локалним издизањима. Повремено је долазило и до прилива силицикласичног материјала, услед локалне тектонике или климатских промена.

На стубу је узето четрнаест композитних проба за конодонте, а урађени су и петрографски препарати. Шест узорака садржи конодонте који су омогућили таксономску идентификацију: P<sub>1</sub> елементе *Neospathodus planus* CHEN & KOLAR-JURKOVŠEK, P<sub>1</sub> елементат недетерминисаног конодонта *Neospathodus* sp., P<sub>2</sub>, S<sub>1</sub>, S<sub>2</sub>, S<sub>3</sub> или S<sub>4</sub> и M елементе од мултиелементарног апарата *Neospathodus planus*, елементе од *Pachycladina–Foliella* конодонтске микрофауне: *Pachycladina obliqua* STAESCHE, *Pachycladina inclinata* STAESCHE, *Foliella gardenae* (STAESCHE) и *Pachycladina* sp. Остала три узорка из горњег дела стуба садрже само рамиформне (гранате) елементе и неодредљиве фрагменте конодоната. У делу пакета 4 пре покривеног дела стуба препознате су две конодонтске зоне: *Pachycladina obliqua–Foliella gardenae* Assemblage

Zone и *Neospathodus planus* Zone и обе су по старости најнижи олењок (доњи смит). Иначе, CAI вредности испитиваних конодоната из Кривог потока су од 5 до 6–7 (5, 5,5, 6, 6–7), са тенденцијом да конодонти из средњег дела стуба (*Neospathodus planus* Zone) имају више вредности. Ове CAI вредности одговарају температурама од 300–490 °C карактеристичним за веома низак до низак степен метаморфизма (GAWLICK *et al.* 1994, SUDAR & KOVÁCS 2006).

Од четрнаест проба третираних за екстракцију конодоната, две садрже и остракоде (SRB-1 и Кр1). Од укупно педесет девет примерака одређена је и нова остракодска врста *Paracypris ? krivipotokensis* FOREL n. sp., која се појављује заједно са врстом *Neospathodus planus* у истоименој конодонтској зони. Већина узорака је представљена са целим љуштурама, указујући на одсуство или постмортални транспорт при ниској енергији и/или брзо затрпавање услед високог режима седиментације (OERTLI 1971).

У пакету 4 (део 4а, узорак SRB-1) нађени су пиритски фрамбоиди, који су по први пут констатовани у доњотријаским стенама како Јадарског блока, тако и Србије. Већи део фрамбоида је нађен унутар остракодских љуштура (капака) где су дефинитивно настали у седиментима након умирања остракода. Неуједначеност у величини њиховог пречника (8–35  $\mu\text{m}$ ) потврђује раније сугестије да нису погодни за дијагнозу палео оксидоредукционог потенцијала морске воде, и да само индицирају диоксичну и сулфидну микросредину унутар љуштура остракода након њихове смрти.

Приказана микрофауна конодоната и остракода, дефинисано конодонтско зонирање, као и пиритски фрамбоиди су скоро у целости по први пут утврђени у просторима Јадарског блока северозападне Србије. Зато су ови налази врло значајни за овај део Алпско-медитеранског региона јер представљају микрорепрезентацију добро документоване доказе доњотријаске старости – најнижи олењок (доњи смит).